

Click on line to
jump to
desired page

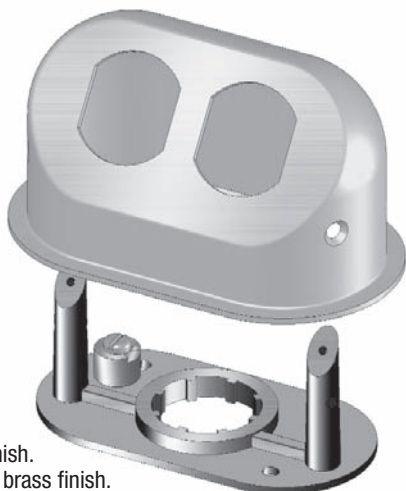
Service Fittings, Floor Boxes & Poles

Power Fittings (Singles)	Page 3.02
Data Fittings (Singles)	Page 3.03
Power Fittings (Doubles)	Page 3.04
Data Fittings (Doubles)	Page 3.05
Combination Fittings	Page 3.06
Single Bases	Page 3.07
Double/Combination Bases	Page 3.08
Fittings Overall Dimensions	Page 3.09
Low Profile Boxes	Page 3.10
Drive Plugs and Adapters	Page 3.11 - 3.13
Abandoning Caps	Page 3.14
Suggested Specification C2600 Series	Page 3.15
C2600 Series Floor Boxes	Page 3.16 - 3.17
Standard Applications C2600 Series	Page 3.18 - 3.20
C800 Series	Page 3.21
Condu-Pole Series 1000 Power Poles	Page 3.22 - 3.24

Power Fittings (Singles)

C200

Duplex Fitting with Positive LOK Base, Brushed Chrome Finish. Add suffix "-BP" for brass finish.



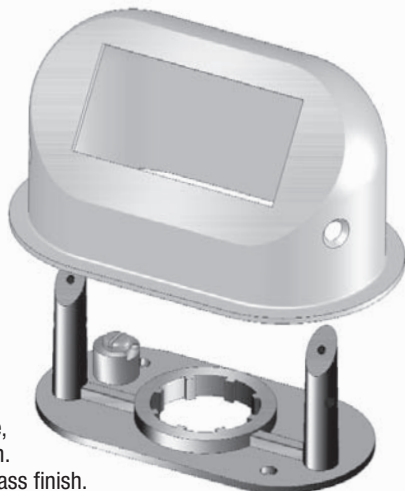
C200-TB

Duplex Fitting with threaded base, Brushed Chrome Finish. Add suffix "-BP" for brass finish.



C200-GF

Decora Fitting with Positive LOK Base, Brushed Chrome Finish. Add suffix "-BP" for brass finish.



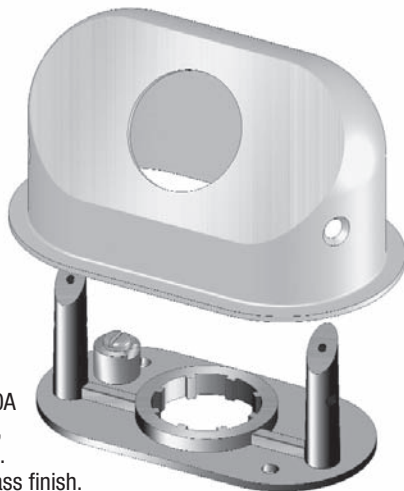
C200-GF-TB

Decora Fitting with threaded base, Brushed Chrome Finish. Add suffix "-BP" for brass finish.



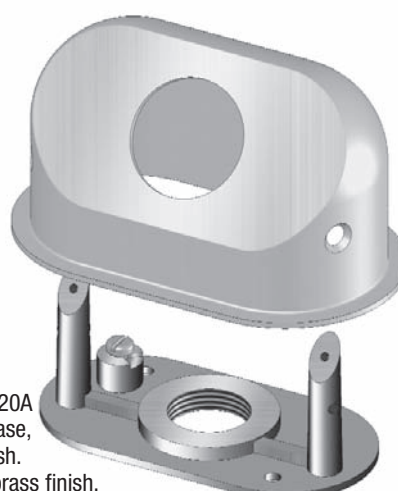
C201

Power Fitting, Single 20A with Positive LOK Base, Brushed Chrome Finish. Add suffix "-BP" for brass finish.



C201-TB

Power Fitting, Single 20A with 3/4" threaded base, Brushed Chrome Finish. Add suffix "-BP" for brass finish.



Data Fittings (Singles)

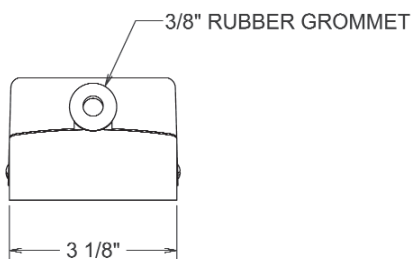
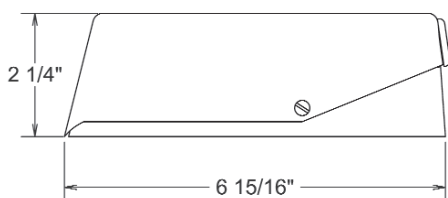
C191

Data Fitting, comes with positive LOK base. Brushed chrome finish. Add suffix "-BP" for brass finish.



C191-TB

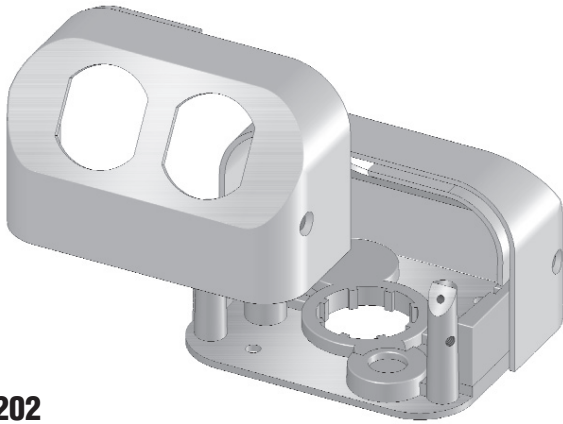
Data Fitting, comes with 3/4" threaded base. Brushed chrome finish. Add suffix "-BP" for brass finish.



C196

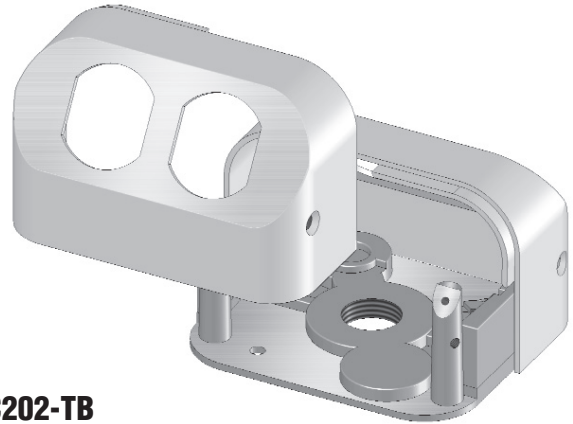
Data Fitting for up to 3 amphenols. Brushed chrome finish. Add suffix "-BP" for brass finish.

Power Fittings (Doubles)



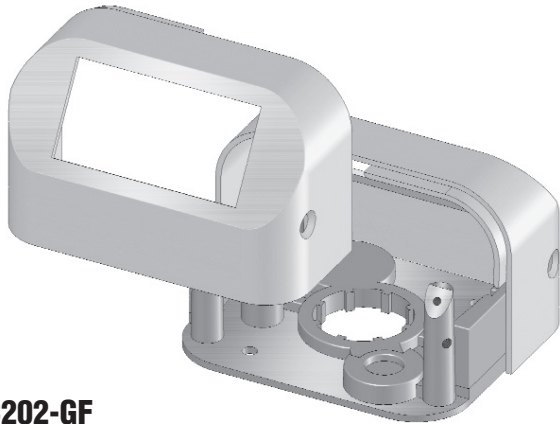
C202

Double Duplex Fitting with Positive LOK Base, Brushed Chrome Finish. Add suffix "-BP" for brass finish.



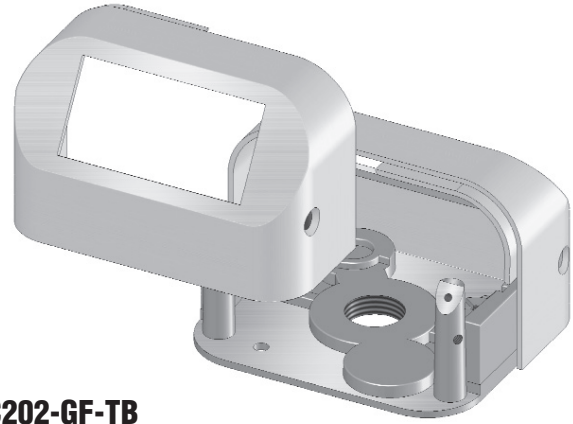
C202-TB

Double Duplex Fitting with threaded base, Brushed Chrome Finish. Add suffix "-BP" for brass finish.



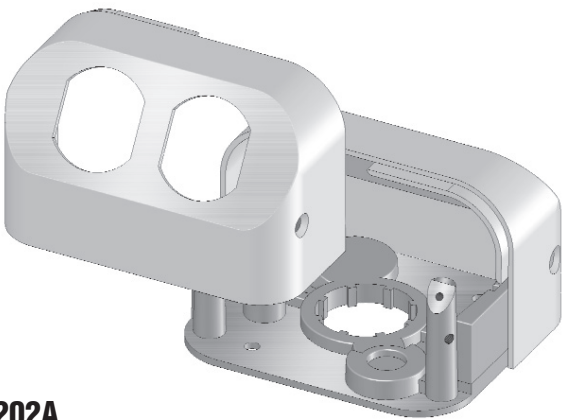
C202-GF

Double Decora Fitting with Positive LOK Base, Brushed Chrome Finish. Add suffix "-BP" for brass finish



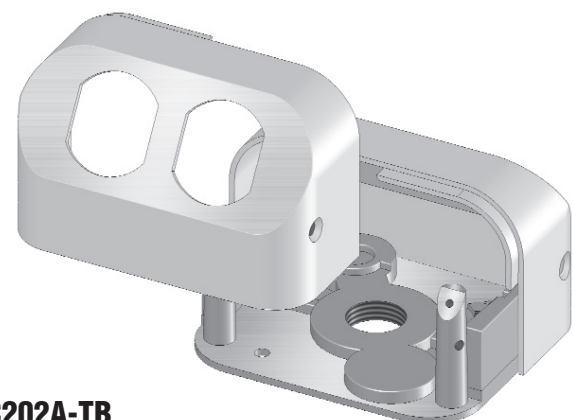
C202-GF-TB

Double Decora Fitting with threaded base, Brushed Chrome Finish. Add suffix "-BP" for brass finish.



C202A

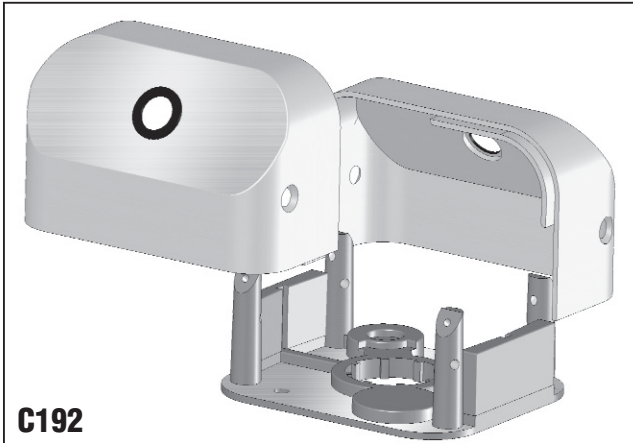
Double Fitting, 1 Duplex and 1 Blank, with Positive LOK Base, Brushed Chrome Finish. Add suffix "-BP" for brass finish.



C202A-TB

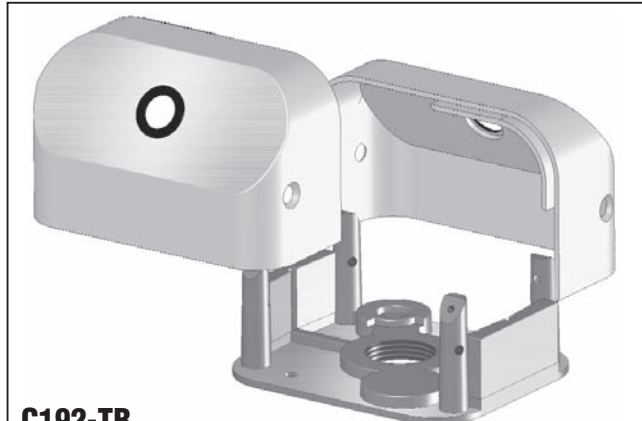
Double Fitting, 1 Duplex and 1 Blank, with threaded base, Brushed Chrome Finish. Add suffix "-BP" for brass finish.

Data Fittings (Doubles)



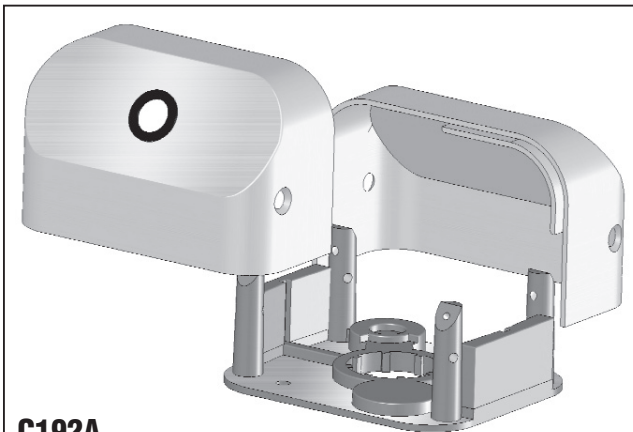
C192

Double Data Fitting with positive LOK base. Brushed chrome finish. Add suffix "-BP" for brass finish.



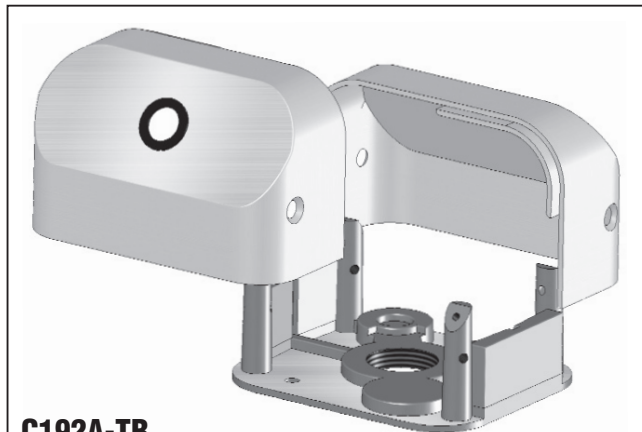
C192-TB

Double Data Fitting with threaded base. Brushed chrome finish. Add suffix "-BP" for brass finish.



C192A

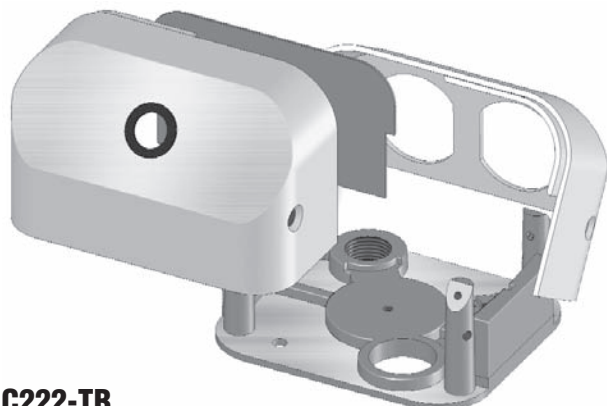
Double data fitting one side blank with positive LOK base. Brushed chrome finish. Add suffix "-BP" for brass finish.



C192A-TB

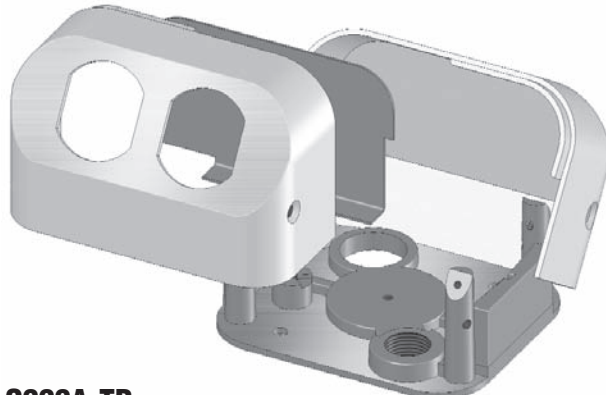
Double Data Fitting with threaded base. Brushed chrome finish. Add suffix "-BP" for brass finish.

Combination Fittings



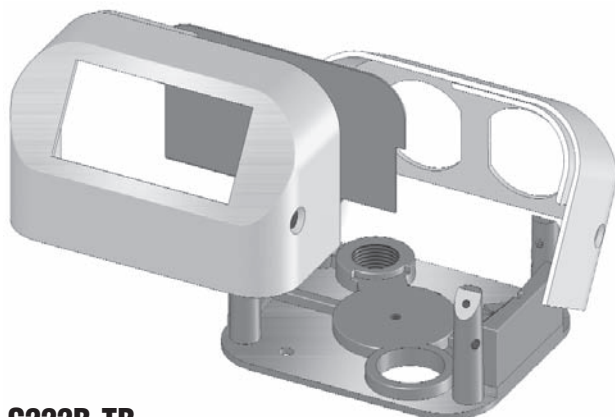
C222-TB

Double Fitting, 1 Duplex and 1 Grommet with threaded base and barrier, Brushed Chrome Finish. Add suffix "-BP" for brass finish



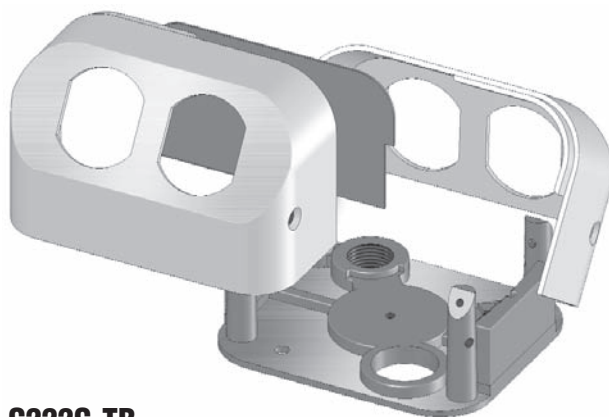
C222A-TB

Double Fitting, 1 Duplex and 1 Blank with threaded base and barrier, Brushed Chrome Finish. Add suffix "-BP" for brass finish.



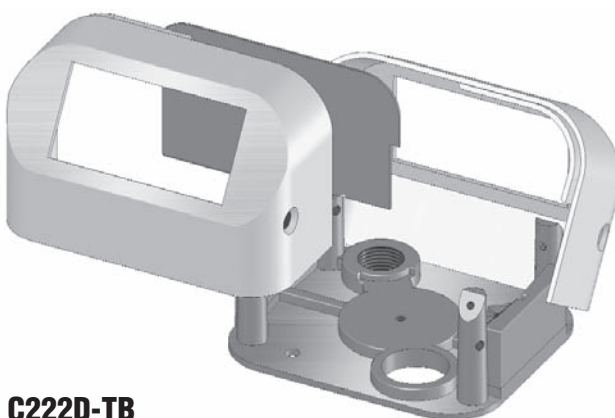
C222B-TB

Double Fitting, 1 Duplex and 1 Decora with threaded base and barrier, Brushed Chrome Finish. Add suffix "-BP" for brass finish.



C222C-TB

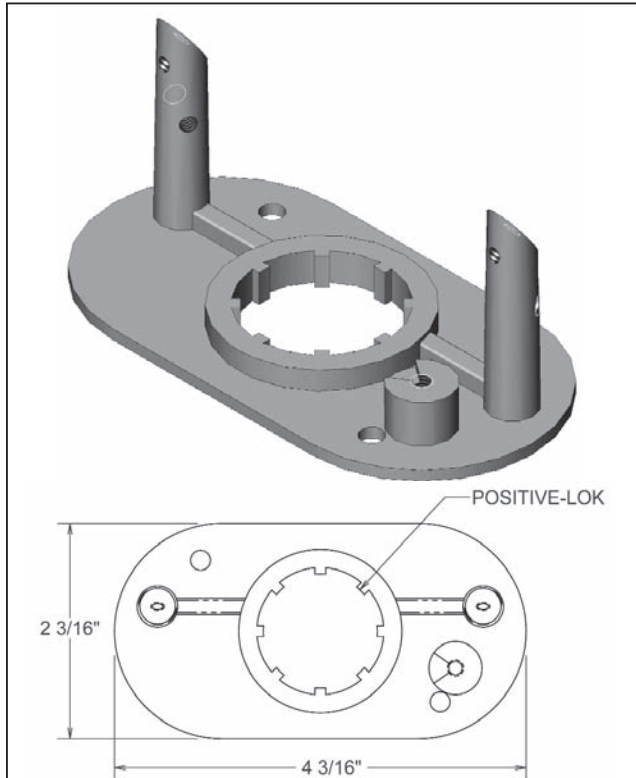
Double Fitting, 2 Duplex with threaded base and barrier, Brushed Chrome Finish. Add suffix "-BP" for brass finish.



C222D-TB

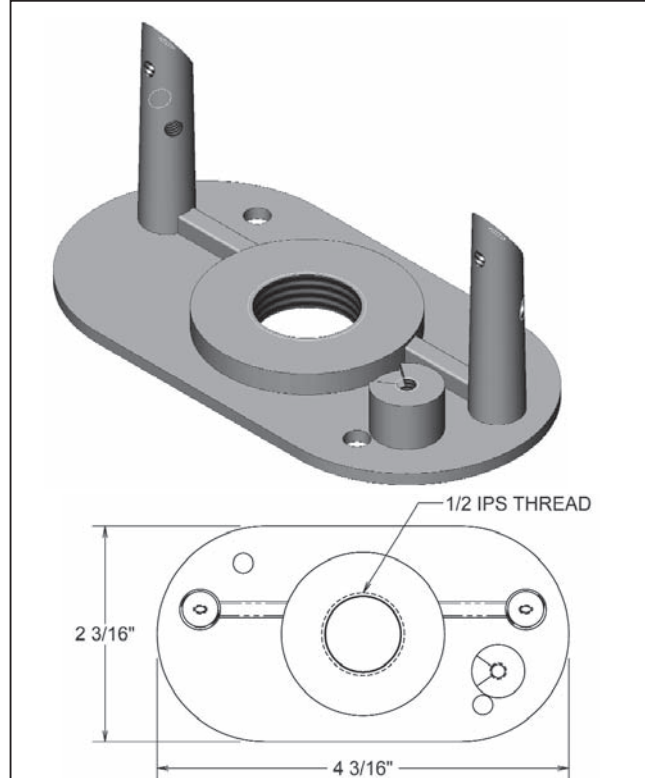
Double Fitting, 2 Decora with threaded base and barrier, Brushed Chrome Finish. Add suffix "-BP" for brass finish.

Bases



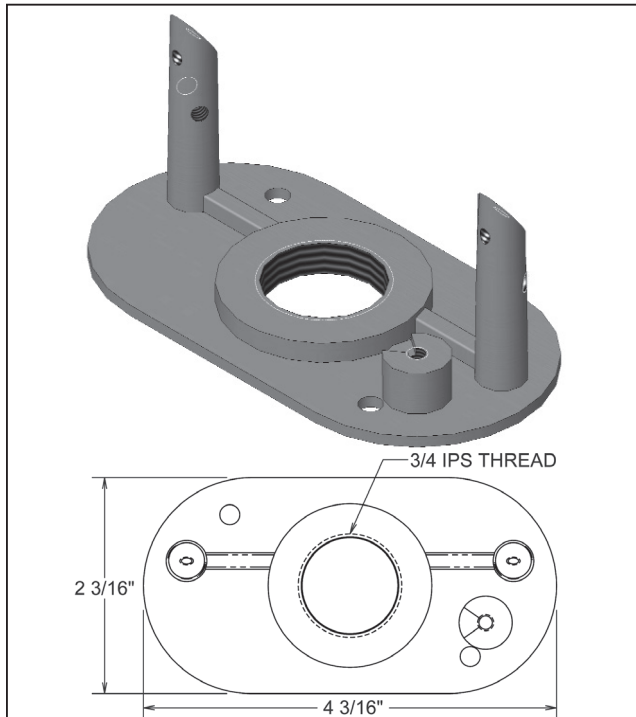
C200-N

Positive LOK Base for 191, 200 and 201 Service Fittings.



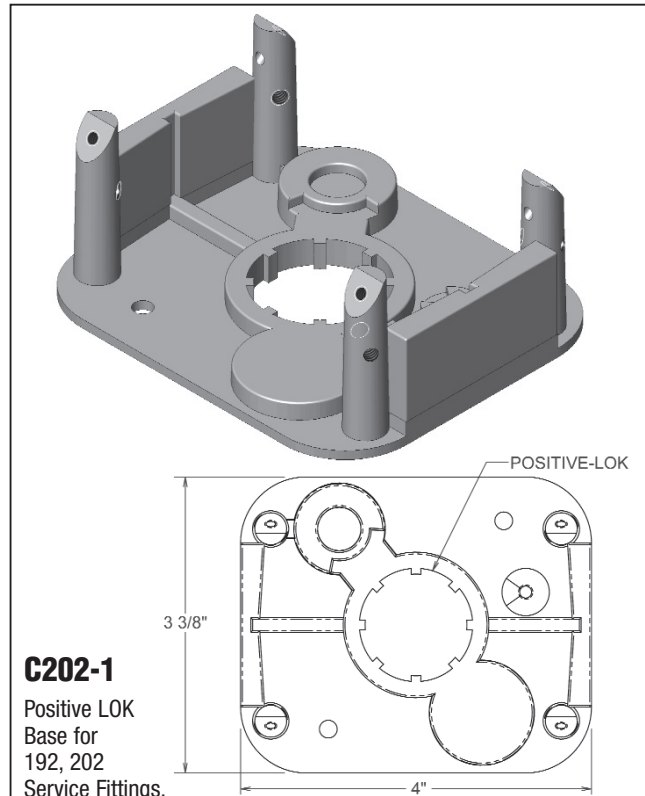
C200-N-TB

1/2" IPS Threaded Base for 191, 200 and 201 Service Fittings.



C191-N-TB

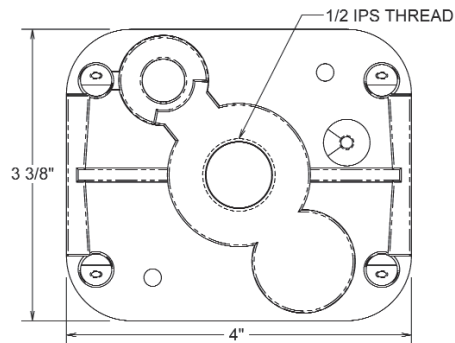
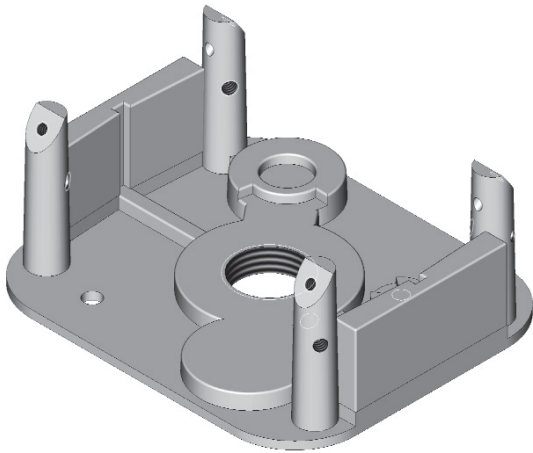
3/4" IPS Threaded Base for 191, 200 and 201 Service Fittings.



C202-1

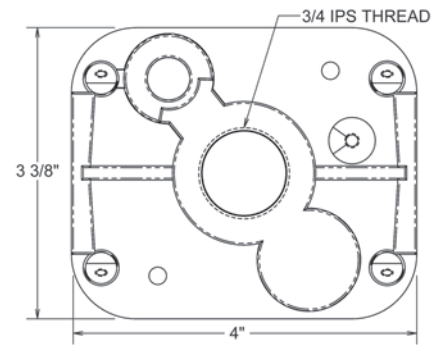
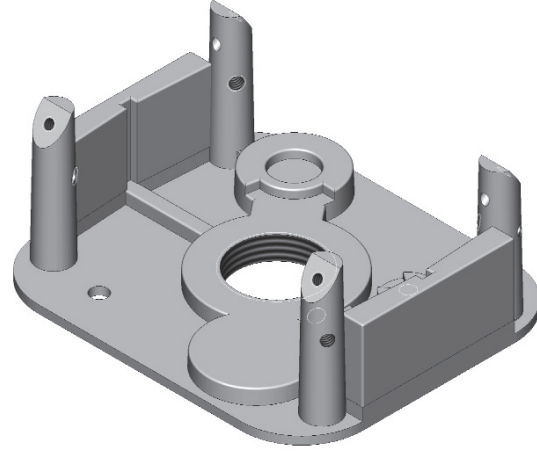
Positive LOK Base for 192, 202 Service Fittings.

Double and Combination Bases



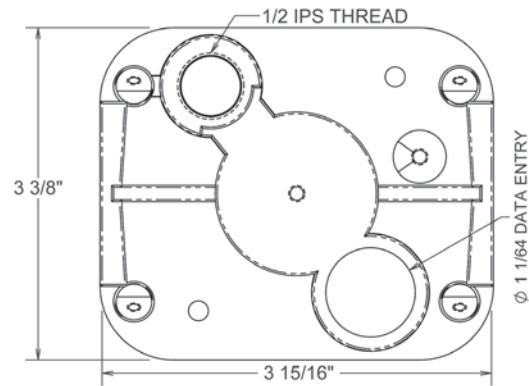
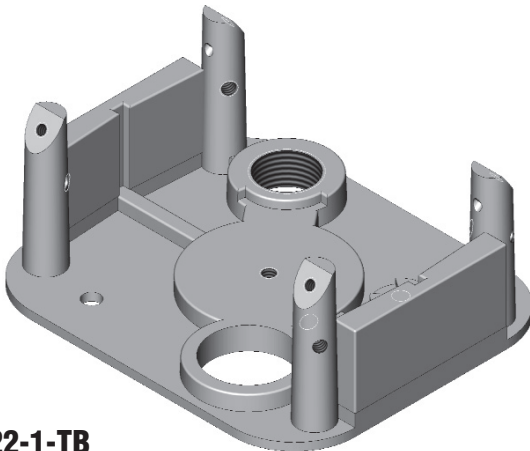
C202-1-TB

1/2" IPS Threaded Base for 202 Service Fittings.



C192-1-TB

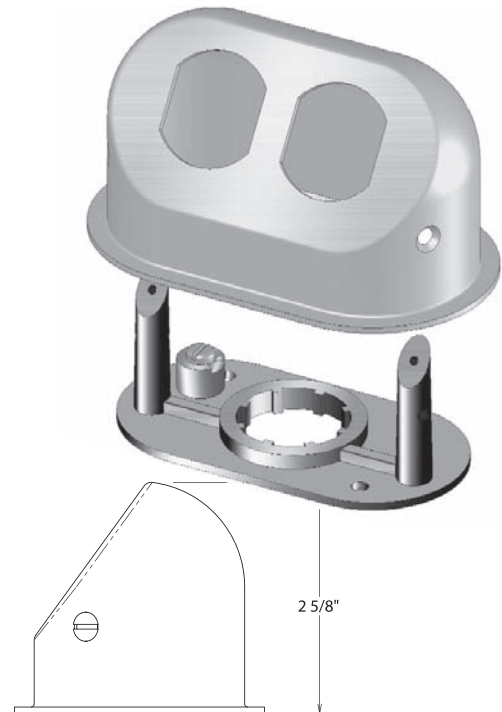
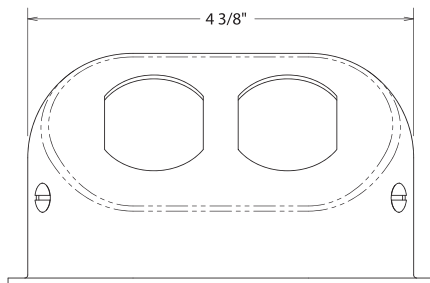
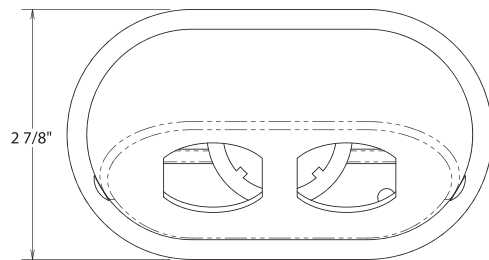
3/4" IPS Threaded Base for 192 Service Fittings.



C222-1-TB

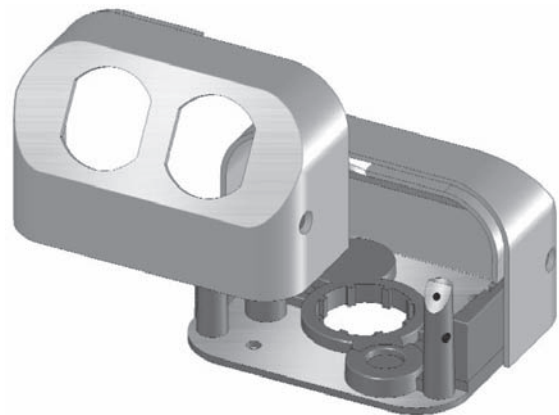
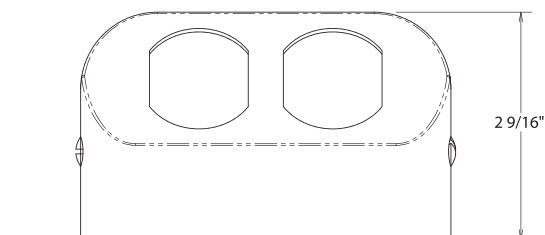
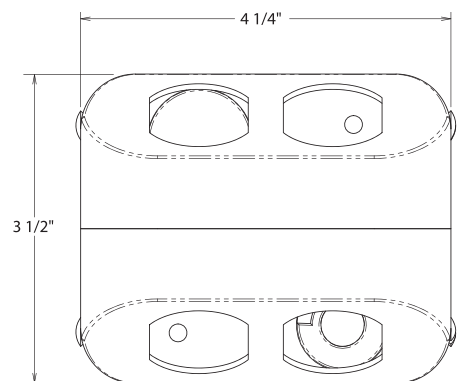
Combination Base with 1/2" IPS threaded Entry and 1" Data Entry for 222 Service Fittings.

Fitting Dimensions



Single Power/ Data Service Fitting Dimensions.

This applies to 191, 200 and 201 Service Fittings. C200 Service Fitting is shown here.



Double Power / Data Service Fitting Dimensions.

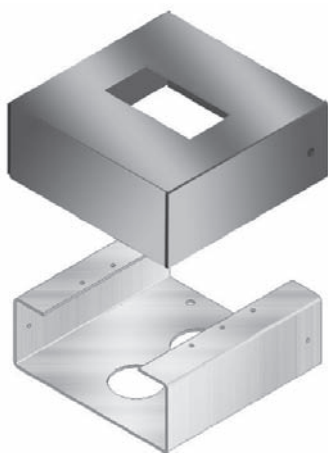
This applies to 192, 202 and 222 Service Fittings. C202 Service Fitting is Shown Here.

Low Profile Boxes

Conduflor's solution to the markets varying power and communication requirements. These units can accommodate up to four receptacles and up to four different cable/ conductor systems. The low profile allows the use of larger GFCI, surge suppressor, and isolated ground receptacles.

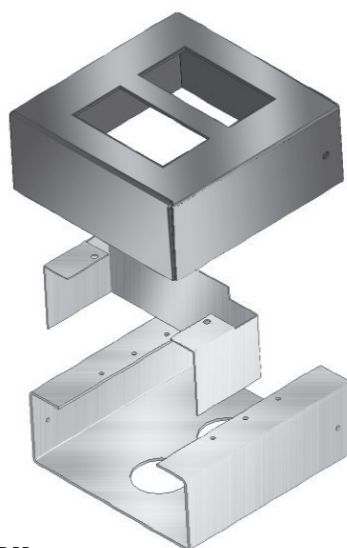
CSA approved and NRTL/C Certified to UL Standards. Construction consists of a rugged 16 gauge zinc plated steel base with a movable barrier for isolating different voltages. The sturdy cover is formed from 16 gauge steel and securely fastens to the floor base.

Units can be fed from most Underfloor Duct Systems, including conduit and drive plugs from the ceiling below.



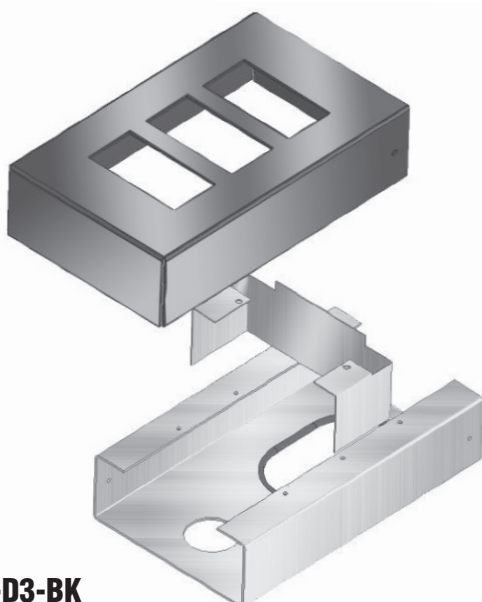
C375-D1-BK

One Decora Opening Low Profile Floor Box, Standard Finish Black. Other finishes available upon request.



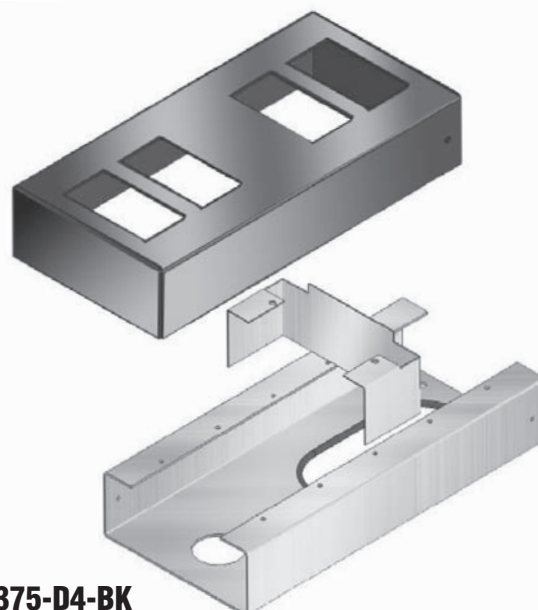
C375-D2-BK

Two Decora Opening Low Profile Floor Box with Barrier. Standard Finish Black. Other finishes available upon request.



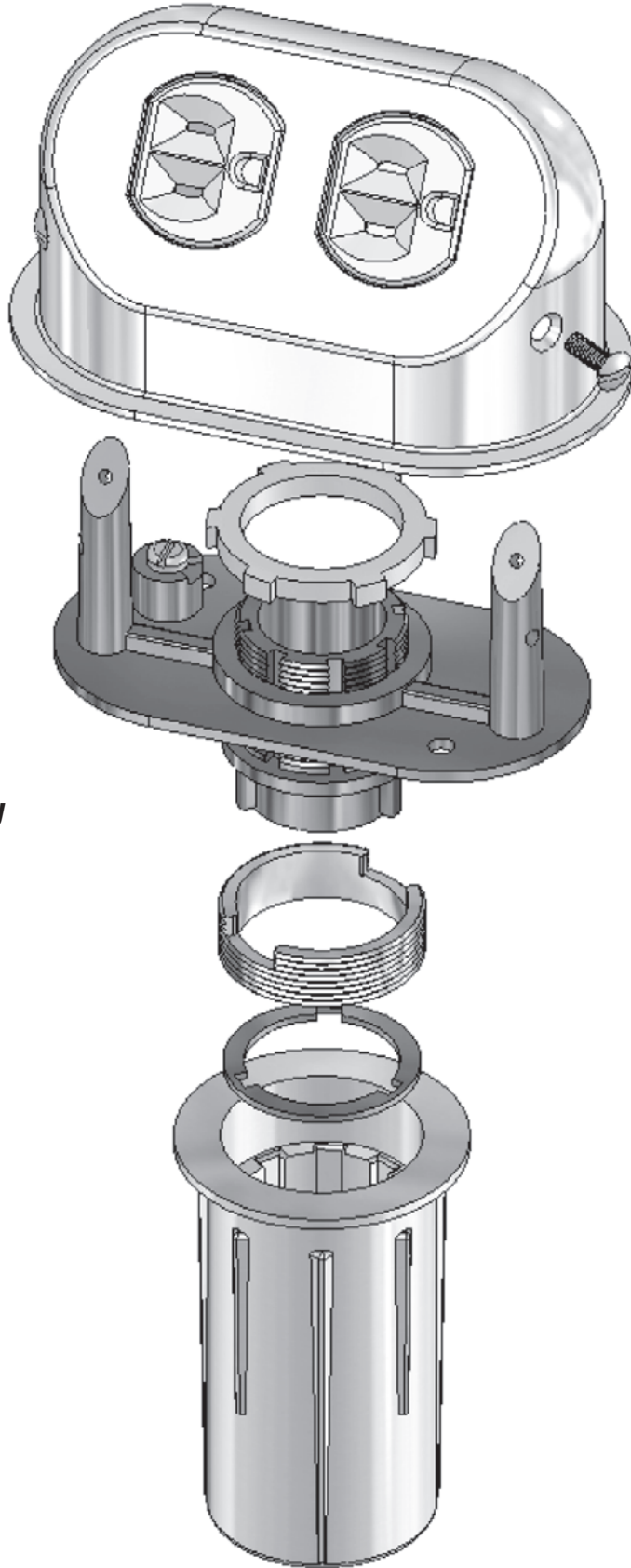
C375-D3-BK

Three Decora Opening Low Profile Floor Box with Barrier. Standard Finish Black. Other finishes available upon request.



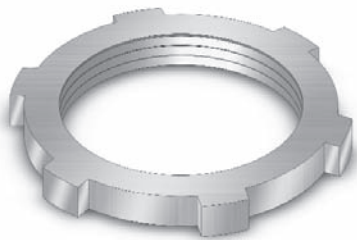
C375-D4-BK

Four Decora Opening Low Profile Floor Box with Barrier. Standard Finish Black. Other finishes available upon request.



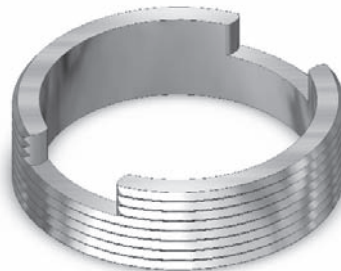
Drive Plug and Adaptor Assembly

Here shown with C200 Duplex Fitting



C181-6

Locknut 1" IPS



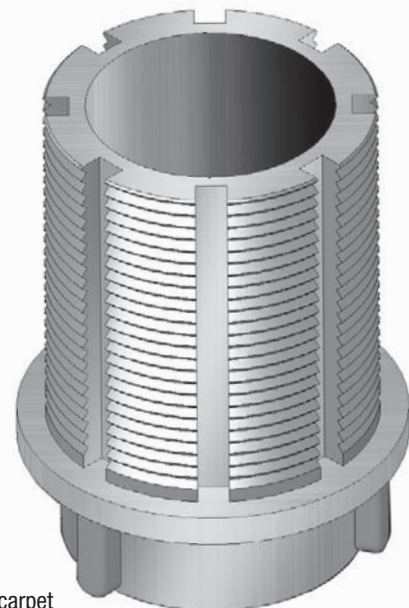
C181-4

Nipple Locking Ring 1-1/2"
Fine Thread



C181-2N

1" Nipple for floor tile
Base supplied threaded or positive LOK as shown.
Add suffix "T" if threaded base required.



C181-2AN

1-3/4" Nipple for carpet
Base supplied threaded or positive LOK as shown.
Add suffix "T" if threaded base required.



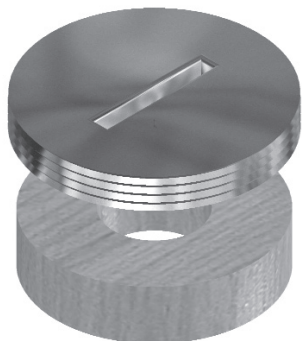
C181-3N

Nipple Gasket



C181-1-3- 3-8

Drive Plug Casting
3-3/8" Long
for 1-7/8" Concrete Holes.
(Consult with factory for
special lengths from
1-1/2" in 1/4" increments.)



C184

Abandoning Cap for C181 Drive Plug c/w Gasket, Polished Cast Zinc



C130-1 (1")

C130-1.5 (1.5")

C130-2 (2")

C130-2.5 (2.5")

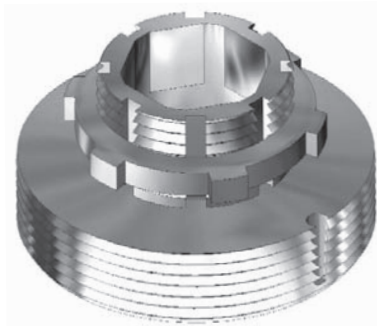
Afterset Insert
(for other heights insert extensions are used)



C550-11 (3/4" High Extension)

C550-12 (1" High Extension)

Insert Extension



C550-1

3/4" High Insert Adaptor for Tile Floor Finish.
2" IPS Threaded Base and 1" IPS Threaded Neck, C/W Lock Nut.

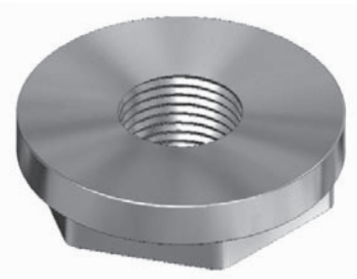
C550-1A

1" High Insert Adaptor for Carpet Floor Finish.
2" IPS Threaded Base and 1" IPS Threaded Neck, C/W Lock Nut.



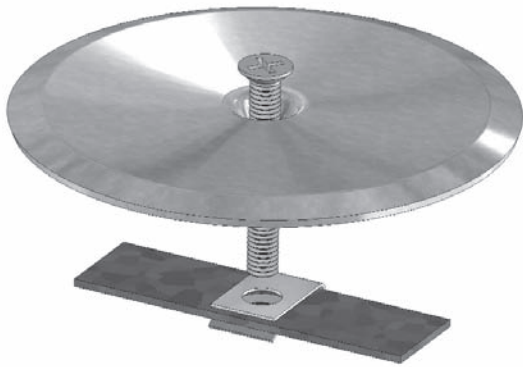
C187-1

Drive Plug Casting for 2-1/2" dia. concrete holes, 3-3/8" high.
(Consult factory for special lengths)



C187-3 (1/2") for 1/2" conduit

C187-4 (3/4") for 3/4" conduit reducer bushing
(for base of cat.# C187 drive plug)

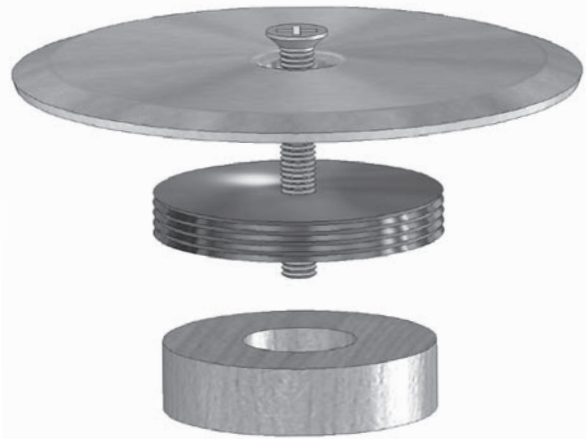


C134-SS

As above except comes with 3-1/8" dia. stainless steel plate.

C134-BP

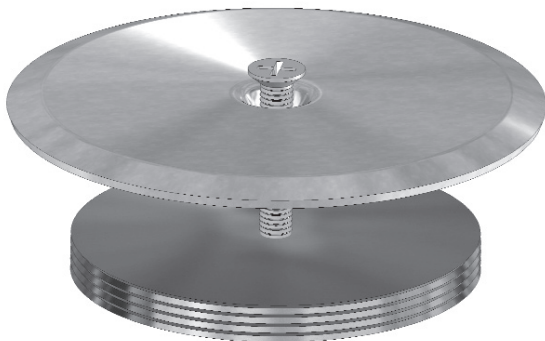
As above except comes with 3-1/8" dia. brass plate.



C186-BP Brass

C186-SS Stainless Steel

Blanking Plate/Abandoning Cap
(for C181 drive plug)



C550-2-SS

Blanking Plate, stainless steel
(for 2" IPS insert or C187 drive plug)
(to specify brass, change suffix "-SS" to "-BP")

C550-2-1

Threaded base only. 2" Dia. cast

2600 Series - Heavy Duty Flush Floor Outlet Box - Specification

The catalogue No. C2612 or C2606 are standard flush floor outlet boxes supplied from stock. Custom boxes of various lengths and depths can be supplied on request.

These floor boxes are CSA and NRTL/C approved to ANSI/UL standards. They are designed for both pre-pour and after-set installation in concrete and computer floor applications.

The unactivated box base is 6" wide by 6" or 12" long by 1-1/2" or 6" deep, and is manufactured from 0.060 inch thick (16 gauge) cold rolled steel with an ASA 61 grey powder coated baked on finish. It is complete with 3 - 1/2" / 3/4" / 1" combination knockouts, on each end and 4 in the bottom for easy connection to conduits, underlying raceways or ceiling access. It comes with a solid 0.1345 inch thick (10 gauge) steel blank mud cover for pre-pour installation. The box can be levelled prior to pouring concrete by using the four 1/4 - 20 x 2" screw down levelling feet. The same feet are used as hold downs to connect the box to underlying raceways as well.

The standard floor box activating assembly can be shipped separately from the unactivated floor boxes so they do not become lost or damaged on the job sites. The activating unit comes with a sturdy 0.0598 inch thick (16 gauge) stainless steel trim/frame sub assembly.

Internally, two duplex receptacle mounting plates are supplied for the high tension side and two decora plates are supplied for the low tension side. The decora plates allow the end users to install their various low tension adaptors in the field, and can be pre-punched by the factory on special orders.

Solid 0.1345 inch thick (10 gauge) steel double hinged lid assemblies are supplied

with gaskets and three cord outlets. Single hinged lid assemblies are standard on the 2606 series and optional in the 2612 series.

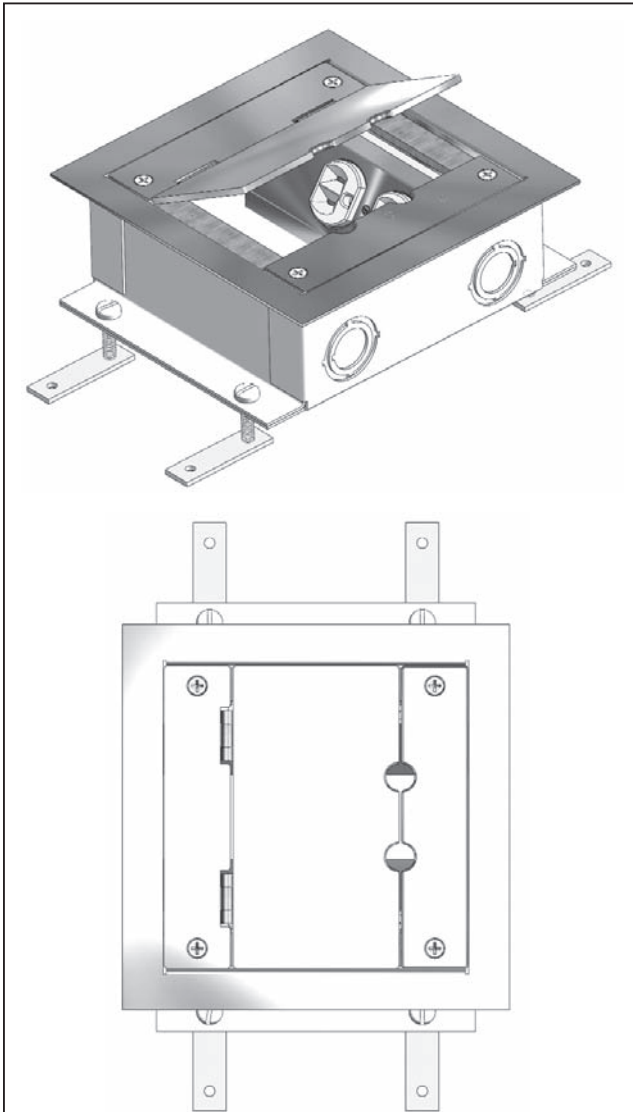
Note: Standard lids are designed to be covered with carpet or tile. Flush stainless lids are available on special orders.

1/4 - 20 x 1.5" long internal frame screws are provided for final adjustment and levelling during activation, making the box completely adjustable before and after the concrete pour or installation.

The 2600 series flush floor outlet box has exceeded the challenge of computer floors by providing portability with a plug-in box. The sub-surface profile can house all services in one unit with maximum capacity and accessibility. When the box is provided with a cord set, low voltage connectors or modular wiring, the computer floor panel and floor box become a single unit and may be relocated simply by unplugging the services.

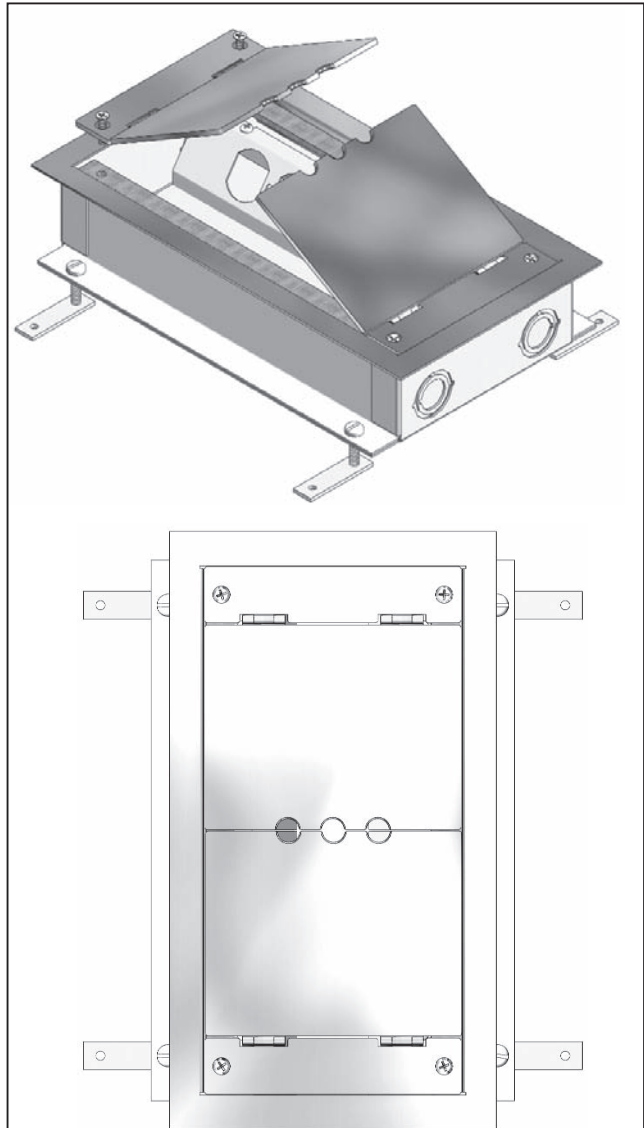
The installation of 2600 series flush floor boxes allows for a lower profile computer floor where there are height restrictions in renovation projects. Also, it provides the tenant with a convenient out-of-the-way service and a flexible access to the internal network of the building. It maintains an unobstructed appearance of the office landscape while providing more service capacity than ever before.

C2600 Series



C2606

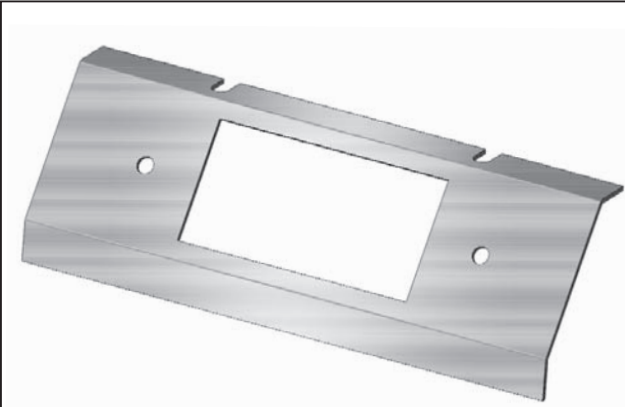
- 6" wide, 6" long and 2-1/2" deep.
- Comes with two decora service plates, two duplex service plates and adjusting screws.
- 1/2", 3/4" and 1" combination knockouts on each end and base.



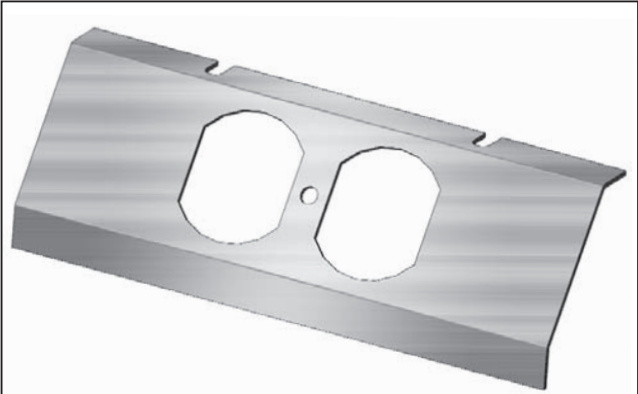
C2612

- 6" wide , 12" long and 2-1/2" deep.
- Comes with two decora service plates, two duplex service plates and adjusting screws.
- 1/2", 3/4" and 1" combination knockouts on each end and base.

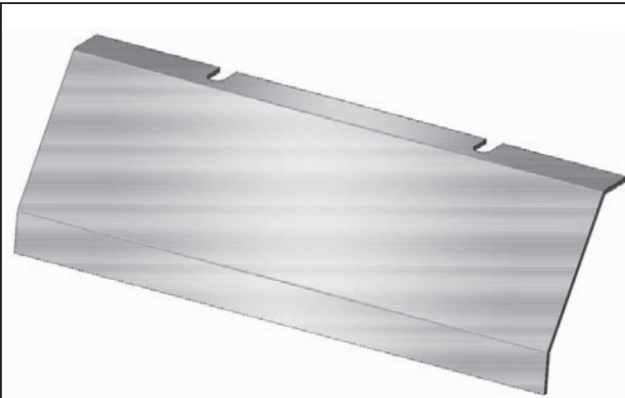
C2600 Series

**C2600-DEC**

Decora service plate

**C2600-DPLX**

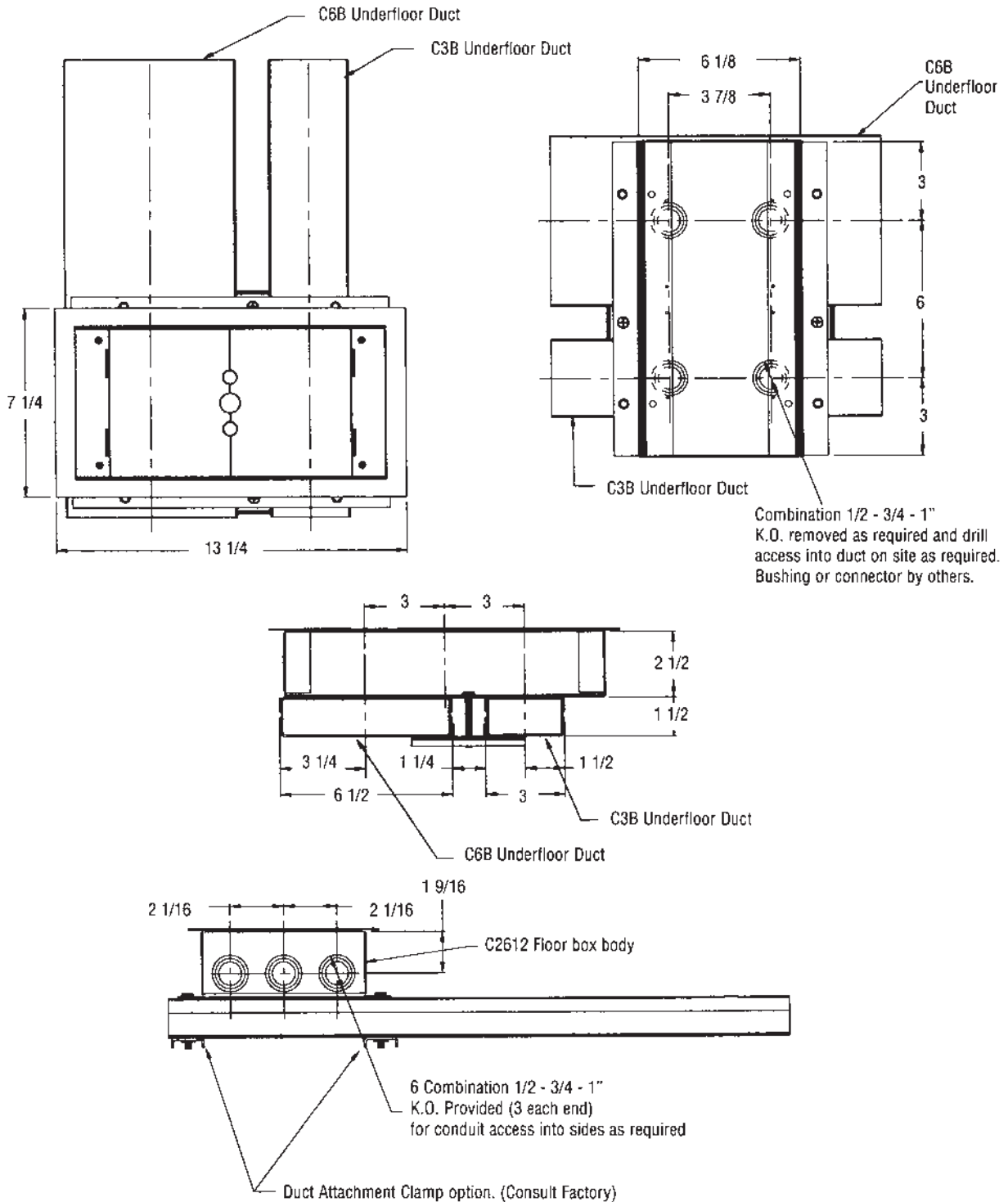
Duplex service plate

**C2600-BLANK**

Blank service plate

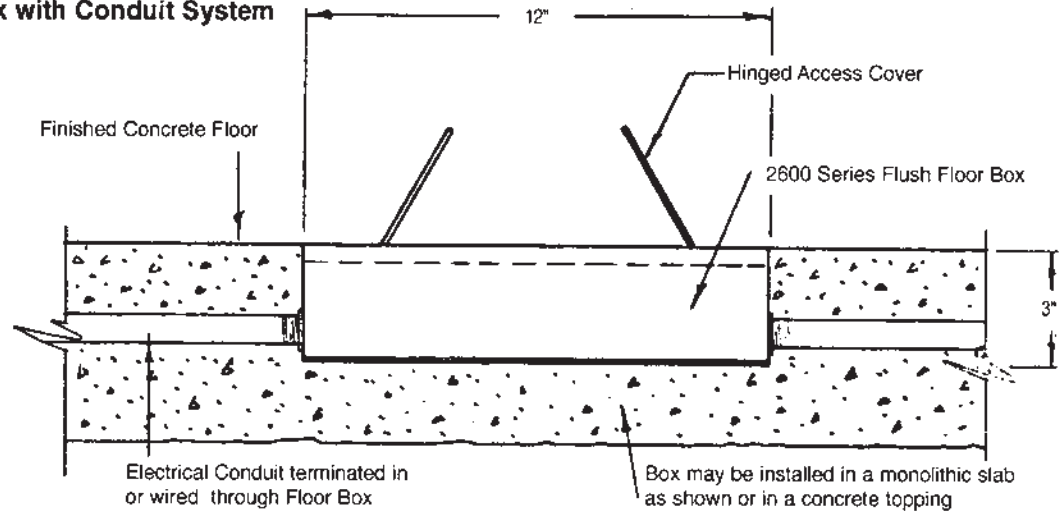
C2600 Series, Standard Application for C2612 and C2606

Flush Floor Box with Underfloor Duct

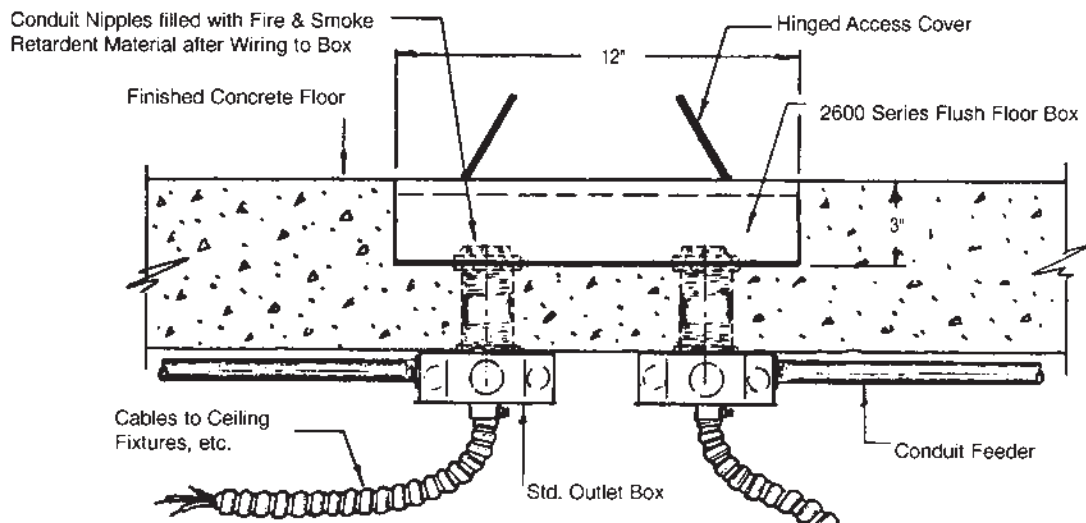


C2600 Series, Standard Application for C2612 and C2606

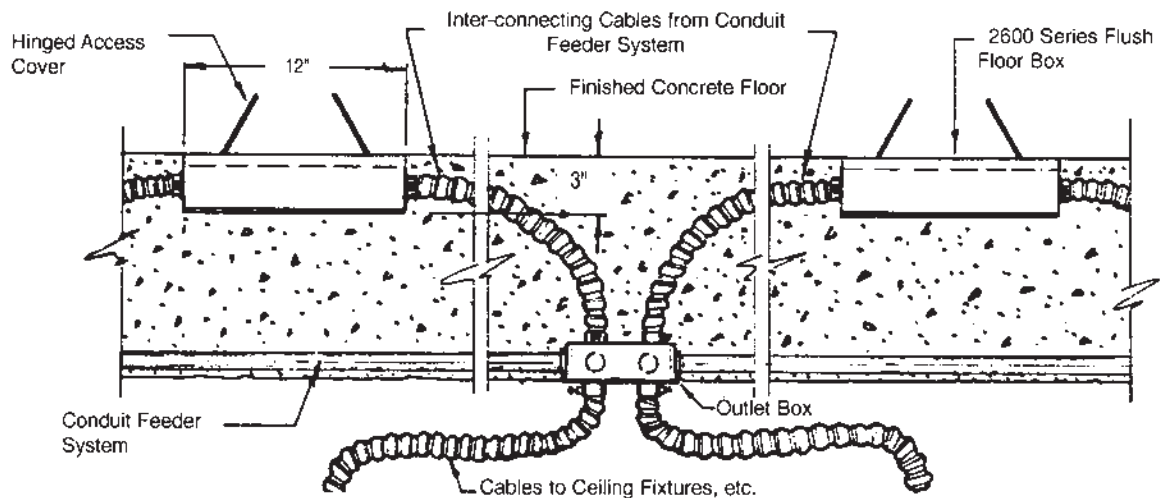
Flush Floor Box with Conduit System



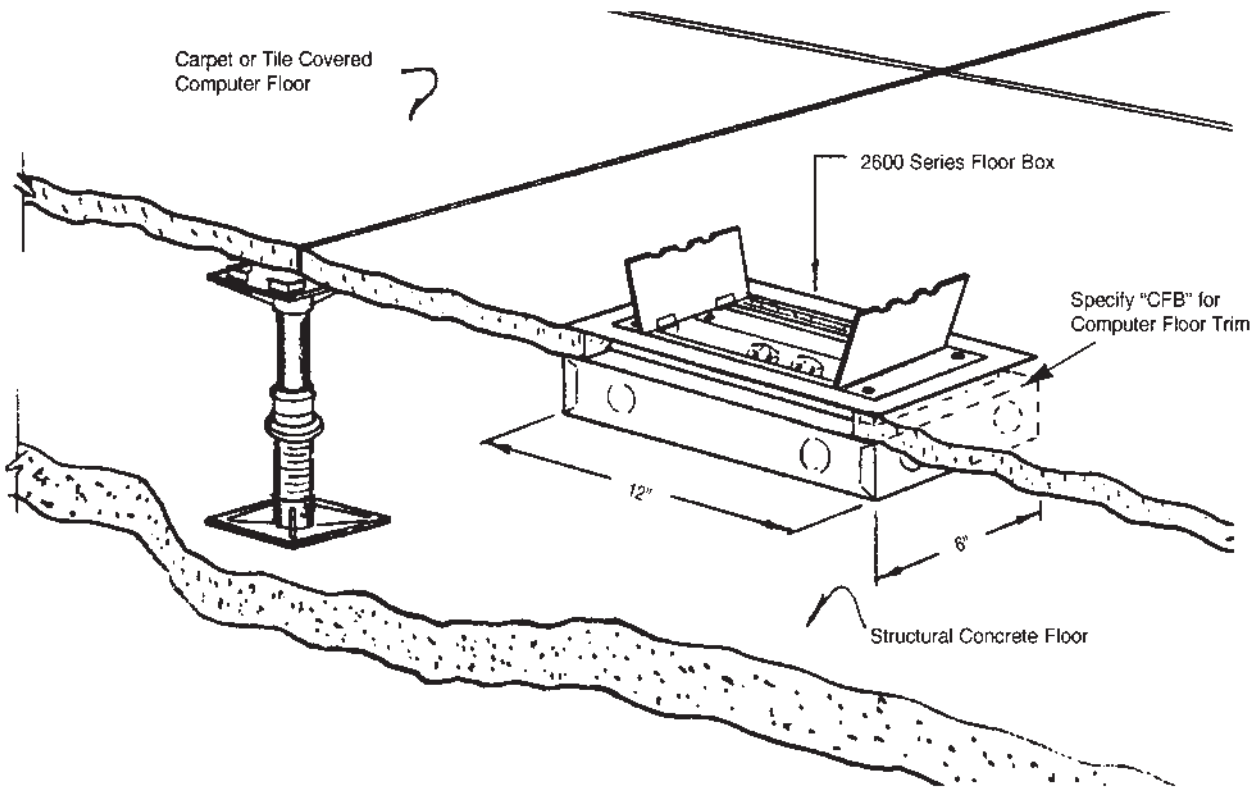
Flush Floor Box with Ceiling to Floor Conduit Feeders



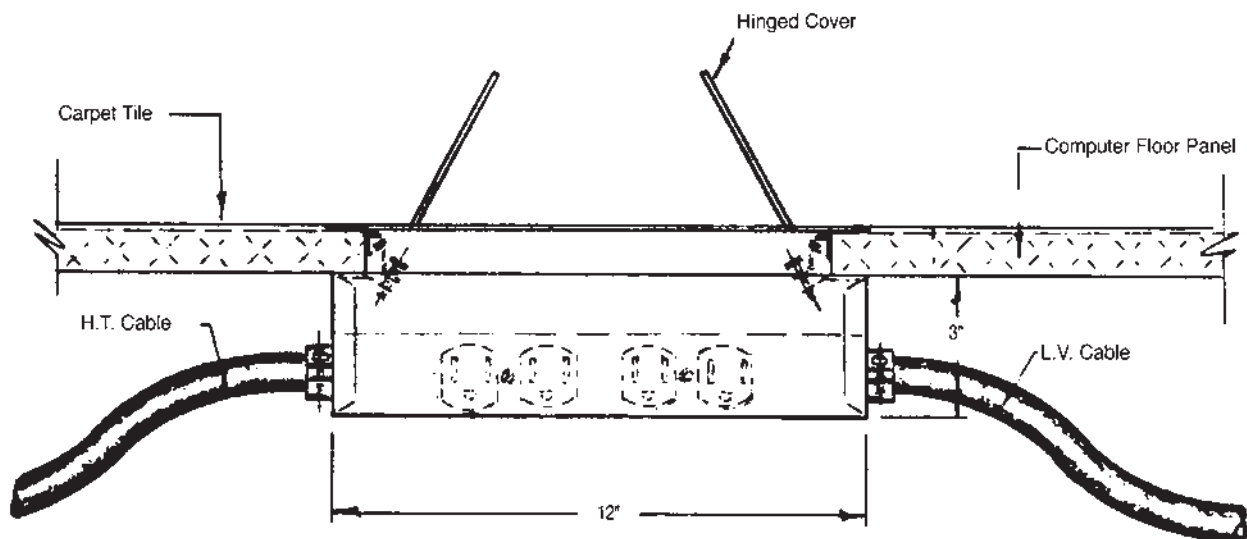
Flush Floor Box with Floor to Ceiling Conduit Feeders



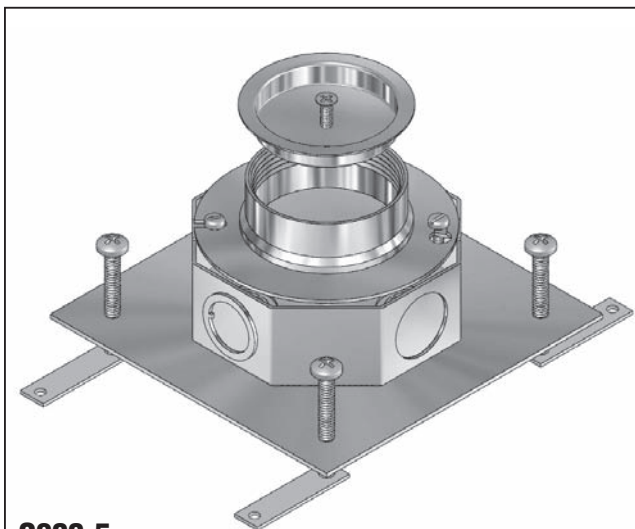
C2600 Series, Standard Application for C2612 and C2606



The 2600 Floor Box
Suspended in a Computer Floor with Direct Wiring or Plug-in Cables for Easy Relocation

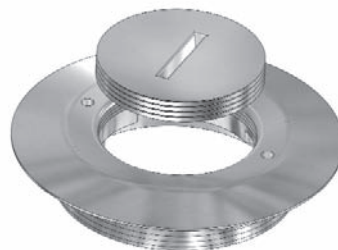


C800 Series



C800-5

Octagon Box Assembly
c/w 1/2" and 3/4" K.O.
Overall height 2-1/2" Nominal



C800-6

Floor Ring and Cap. Add suffix "-BP" for brass plated.



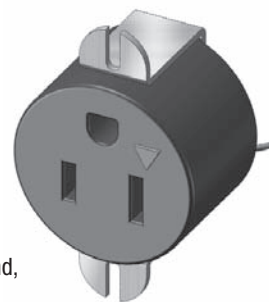
C800-6-3

Carpet Ring Chrome. Add suffix "-BP" for brass plated.



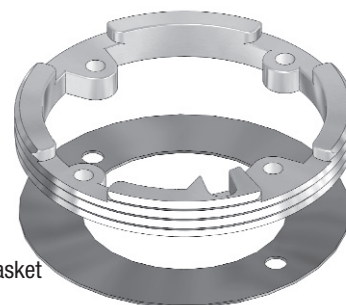
C5258

15A/125V Standard
3 Prong Receptacle.



C5284-IG

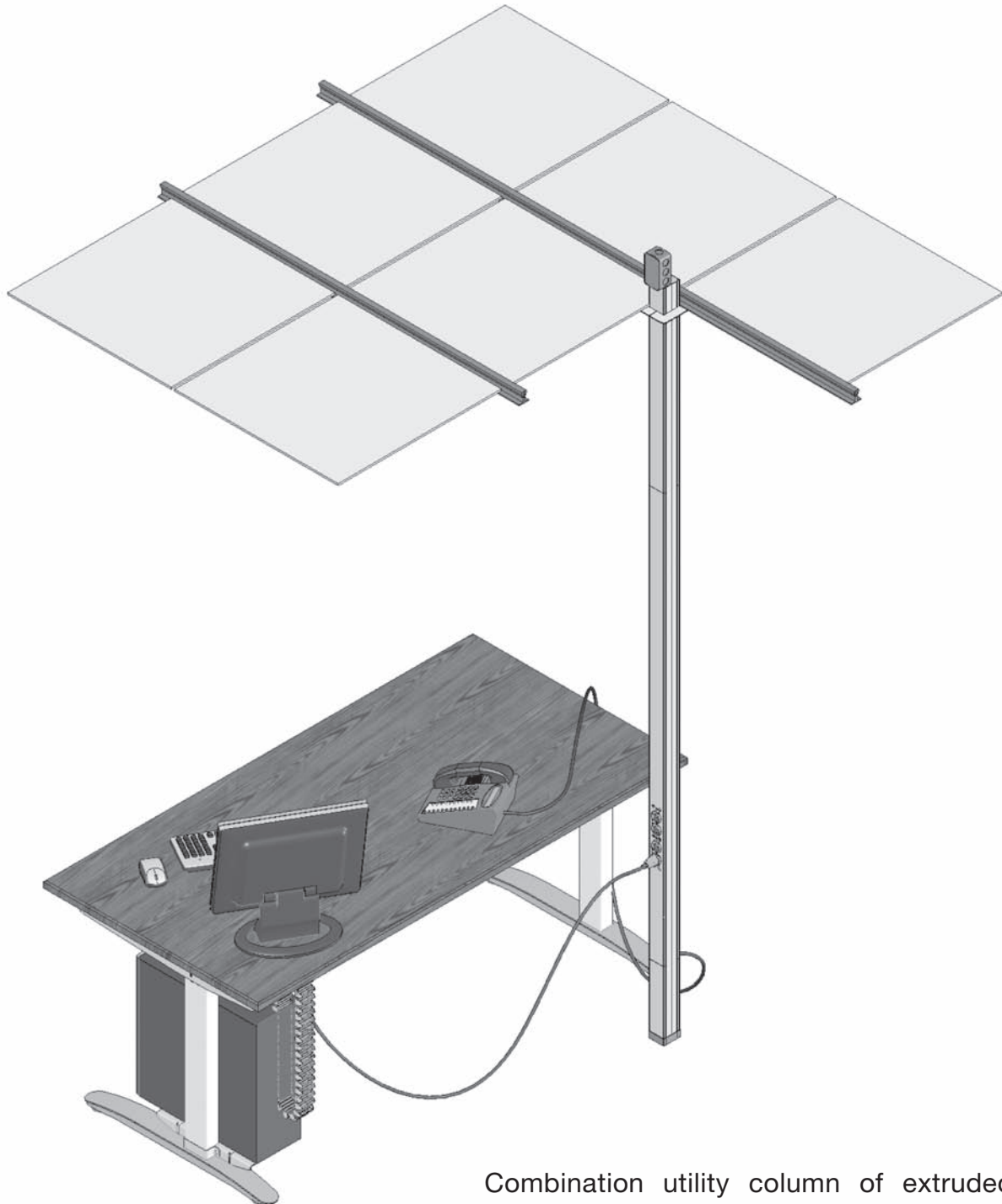
15A/125V, Isolated Ground,
3 Prong Receptacle.



C800-4

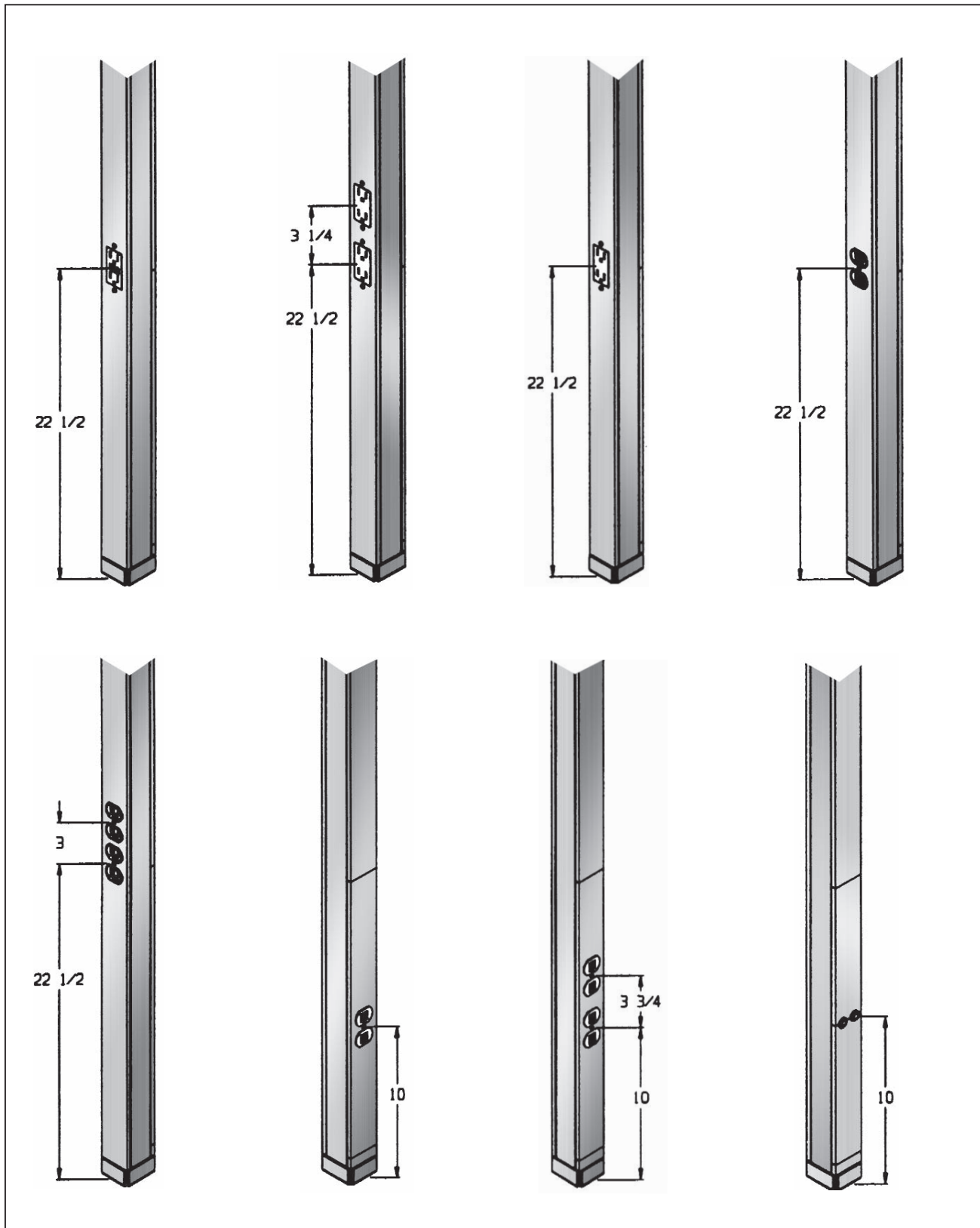
Mounting Ring
for receptacle.
c/w Dust Stop Gasket
(C800-4-2)

Condu-Pole Series 1000



Combination utility column of extruded aluminum, designed for use in offices where power and communications services are distributed within and through the ceiling space. CSA approved.

Condu-Pole Series 1000 Options



Others available upon request

Condu-Pole Series 1000 Power Poles

CONDU-POLE FEATURES SERIES 1000

1. Clear satin anodized finish. Can be painted in specified colors.
2. Unlimited combinations of receptacles.
3. Grommets holes or decora cut outs on data side.
4. Base plate with Velcro attachments for carpet or tiles.
5. Available with adjustable base and vinyl sleeve for height flexibility.
6. Self-adhesive plastic ceiling trim plate with off-white finish.
7. Patented, simplified clip on ceiling support bracket for easy installation on single tee ceiling section.
8. Junction box for hard wiring.
9. Most power and data receptacles can be accommodated.
10. Up to 24 foot in length.
11. Two compartments barriered one for power and one for communications.